

AD-310 Models

| | | | |
|---|------------------------------------|--------------------------------|------------------------|
| Maximum Capacity (Dry Weight) | | 310 lb | 141 kg |
| Basket Diameter | | 62-1/2" | 158.75 cm |
| Basket Depth | | 60" | 152.4 cm |
| Basket Volume | | 106.5 cu.ft. | 3.02 cu.m |
| Basket Motor | | 5 hp | 3.73 kw |
| Blower Motor (Gas/Steam) | | 15 hp / 25 hp | 11.2 kw / 18.7 kw |
| Door Opening* | | 36-3/4" w x 43" h | 93.35 cm x 109.2 cm |
| Door Sill Height, Level | | 36-1/2" | 92.71 cm |
| Compressed Air Volume (non-tilt/1-way/2-way tilt) | | 4 / 5.25 / 6.5 cfm | 0.11 / 0.15 / 0.18 cmh |
| Compressed Air Connection (non-tilt/ tilt) | | 1/8" F.P.T. / 3/8" F.P.T. | |
| S.A.F.E. Water Connection** | | 3/4" F.P.T. | |
| Gas*** | Voltage Available | 208-460v / 3ø / 3,4w / 50/60Hz | |
| | Heat Input | 1,125,000 btu/hr | 283,500 kcal/hr |
| | Approx. Shipping Weight (non-tilt) | 4,700 lb | 2,132 kg |
| | (tilt) | 4,925 lb | 2,234 kg |
| | Airflow | 6,500 cfm | 184 cmm |
| Inlet Pipe Connection**** | | 1-1/2" F.P.T.***** | |
| Steam*** | Voltage Available | 208-460v / 3ø / 3,4w / 50/60Hz | |
| | Approx. Shipping Weight (non-tilt) | 5,100 lb | 2,313 kg |
| | (tilt) | 5,425 lb | 2,461 kg |
| | Airflow | 8,500 cfm | 241 cmm |
| | Steam Consumption | Bhp Normal Load | |
| | 1,153 lb/hr | 524 kg/hr | 35 |
| | Operating Steam Pressure | Supply Connection**** | Return Connection**** |
| 125 psi max | 2" M.P.T. (non-tilt) | 2" M.P.T. (non-tilt) | |
| | 2" M.P.T. (tilt) | 1-1/4" M.P.T. (tilt) | |

Shaded areas are stated in metric equivalents.

* Height is 43" (109.2 cm) maximum at the center of the door.

** Dryer **must** be supplied with 40 psi min/100 psi max. (2.8 bar min./6.8 bar max.) water supply.

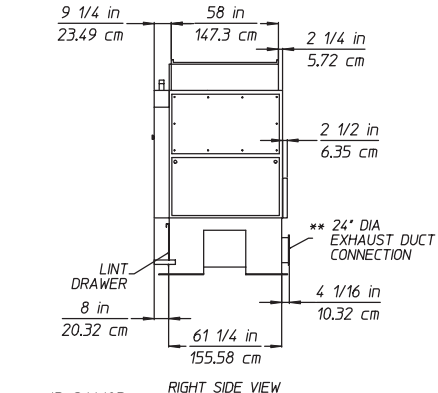
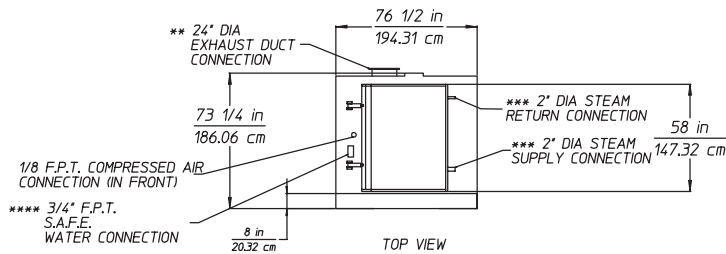
*** Dryer **must** be provided with a clean, dry, regulated 80 psi \pm 10 psi (5.52 bar \pm 0.69 bar) air supply.

**** Size of piping to dryer varies with installation conditions. Contact factory for assistance.

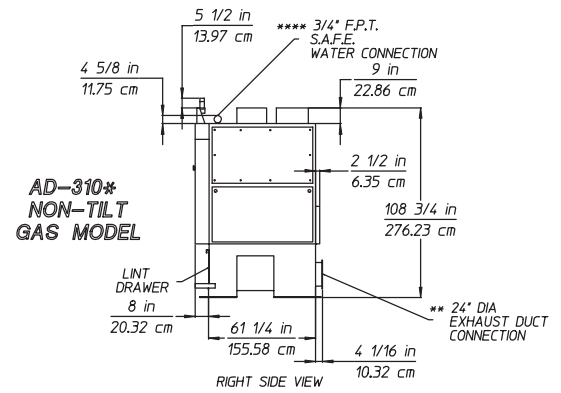
***** Non-tilt units have (2) 1-1/2" F.P.T. gas connections; tilting units have (1) 1-1/2" F.P.T. gas connection.

| —Gas / Steam Electrical Service Specifications (Per Dryer)† | | | | | | |
|--|-------|--------------|------------------|-------|----------------------|-------|
| IMPORTANT: 208 VAC and 230/240 VAC are not the same. When ordering, specify exact voltage. | | | | | | |
| NOTES: A. Circuit breakers are thermal/magnetic (industrial) motor curve type ONLY. For others, calculate/verify correct breaker size according to appliance amp draw rating and type of breaker to be used. | | | | | | |
| B. Circuit breakers for 3ø dryers must be 3-pole type. | | | | | | |
| Service Voltage | Phase | Wire Service | Approx. Amp Draw | | Circuit Breaker Amps | |
| | | | Gas | Steam | Gas | Steam |
| 208 (60 Hz) | 3 | 3/4 | 61.2 | 94.0 | 90 | 125 |
| 240 (50 HZ) | 3 | 3 | 61.1 | 89.9 | 90 | 125 |
| 240 (60 Hz) | 3 | 3 | 56.5 | 85.2 | 90 | 110 |
| 380-400 (50 Hz) | 3 | 3/4 | 35.0 | 50.5 | 60 | 80 |
| 416 (50 Hz) | 3 | 3/4 | 33.2 | 48.6 | 50 | 70 |
| 460/480 (60 Hz) | 3 | 3/4 | 29.4 | 43.6 | 50 | 70 |
| 575 (60 Hz) | 3 | 3 | 23.2 | 34.9 | 40 | 60 |

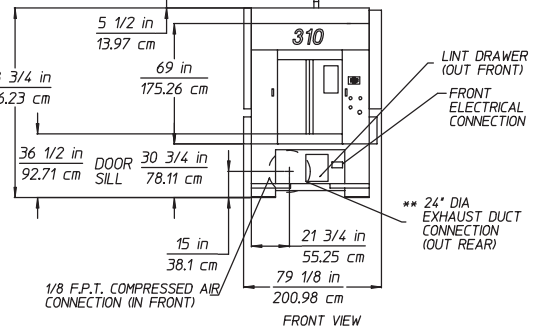
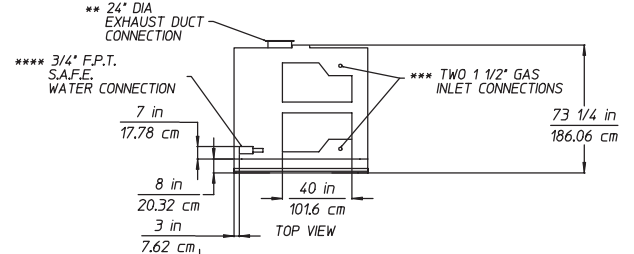
† Contact factory for information not listed.



JB 2/4/03



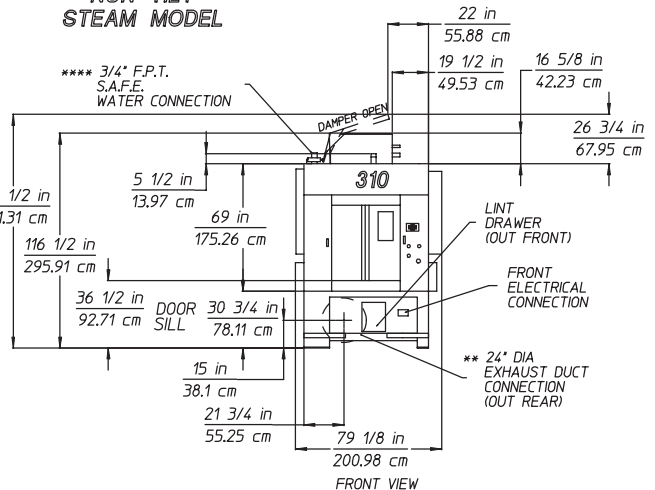
AD-310*
NON-TILT
GAS MODEL



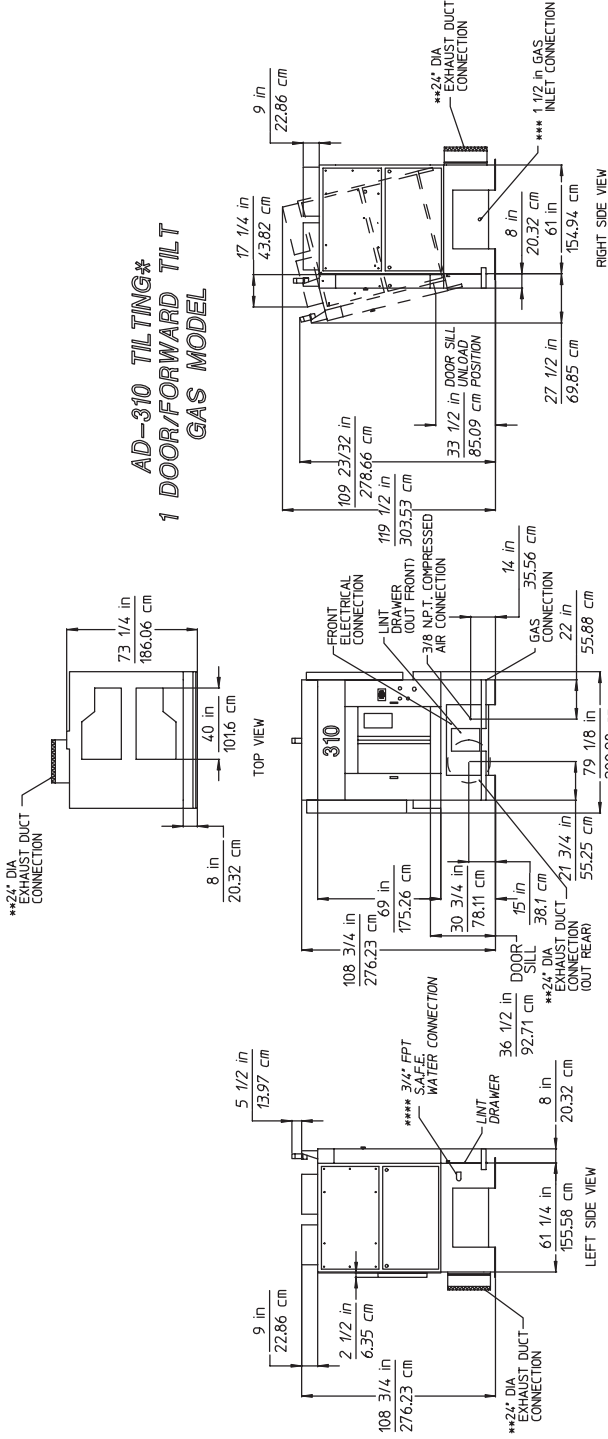
- * BOTH GAS AND STEAM TILTING UNITS MUST BE SUPPLIED WITH CLEAN, DRY, REGULATED AIR AT 80 PSI \pm 10 PSI (5.52 BAR \pm 0.69 BAR).
- ** DUCTWORK SIZE VARIES WITH INSTALLATION CONDITIONS. EXHAUST STATIC PRESSURE SHOULD NOT EXCEED 0.3" WATER COLUMN (0.74 mb).
- *** SIZE OF PIPING TO DRYER VARIES WITH INSTALLATION CONDITIONS. CONTACT FACTORY FOR ASSISTANCE.
- **** S.A.F.E. SYSTEM MUST BE SUPPLIED WITH A 40 PSI MIN/100 PSI MAX. WATER SUPPLY.

Specifications subject to change without notice.

AD-310*
NON-TILT
STEAM MODEL

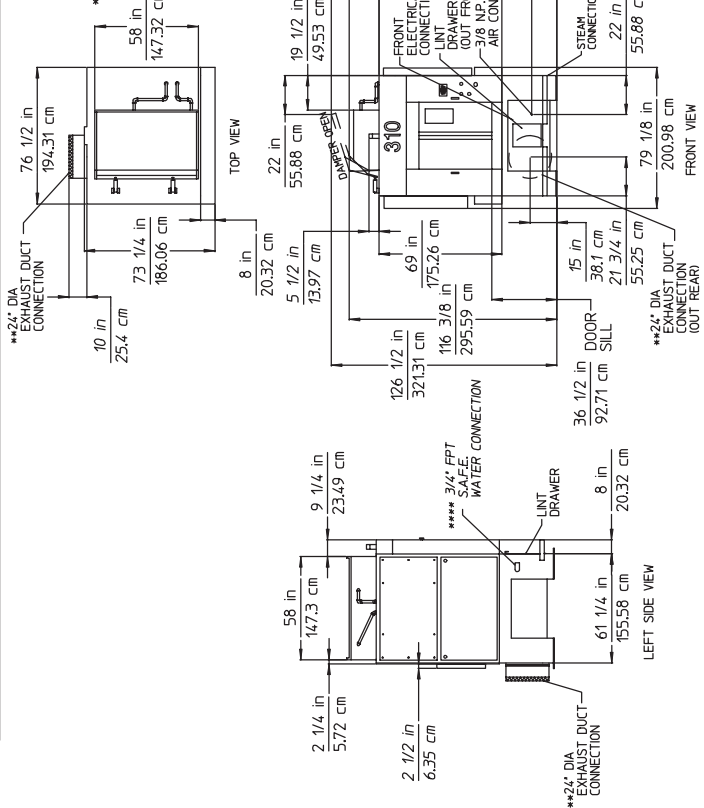


AD-310 TILTING* 1 DOOR/FORWARD TILT GAS MODEL



* BOTH GAS AND STEAM TILTING UNITS MUST BE SUPPLIED WITH CLEAN, DRY, REGULATED AIR AT 80 PSI ± 10 PSI (5.52 BAR ± .69 BAR).
 ** DUCTWORK SIZE VARIES WITH INSTALLATION CONDITIONS. EXHAUST STATIC PRESSURE SHOULD NOT EXCEED 1.0 INCH WATER COLUMN.
 *** SAF.E. SYSTEM MUST BE SUPPLIED WITH WATER AT A PRESSURE OF 40 PSI MIN/100 PSI MAX.
 **** (2.8 BAR MIN/6.9 BAR MAX).

AD-310 TILTING* 1 DOOR/FORWARD TILT STEAM MODEL



* BOTH GAS AND STEAM TILTING UNITS MUST BE SUPPLIED WITH CLEAN, DRY, REGULATED AIR AT 80 PSI ± 10 PSI (5.52 BAR ± .69 BAR).
 ** DUCTWORK SIZE VARIES WITH INSTALLATION CONDITIONS. EXHAUST STATIC PRESSURE SHOULD NOT EXCEED 1.0 INCH WATER COLUMN.
 *** SAF.E. SYSTEM MUST BE SUPPLIED WITH WATER AT A PRESSURE OF 40 PSI MIN/100 PSI MAX.
 **** (2.8 BAR MIN/6.9 BAR MAX).

