

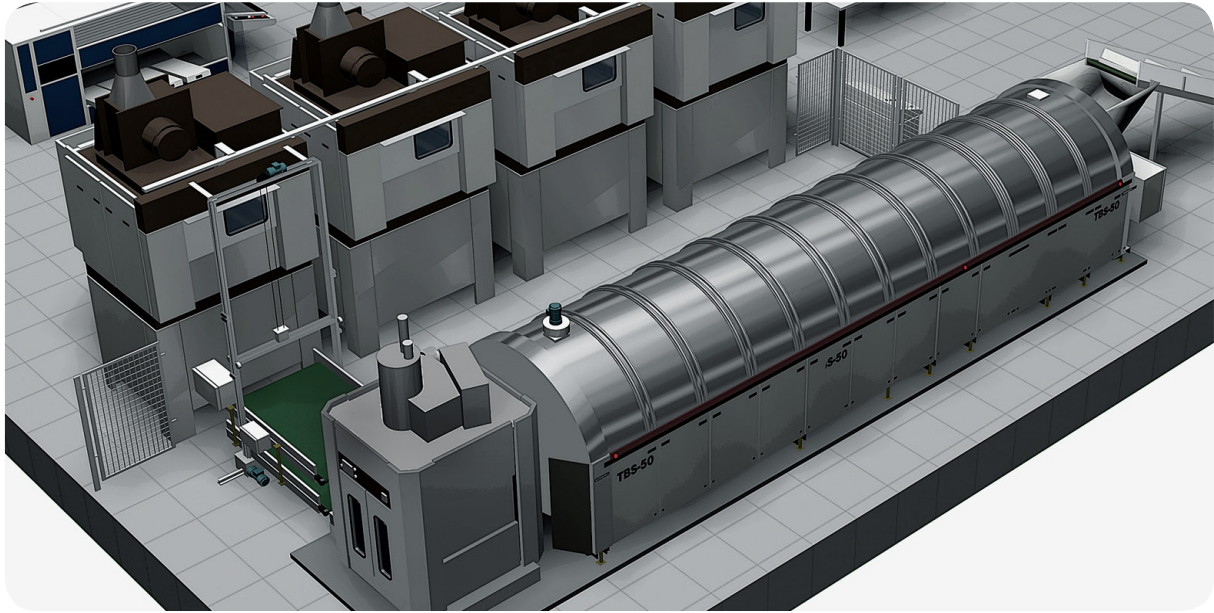


BATCH WASHER TBS-50
CONTINUOUS WASHING SYSTEM

GIRBAU

LAUNDRY EQUIPMENT

CONTINUOUS WASHING SYSTEM



EFFICIENCY FOR LARGE-SCALE PRODUCTIONS

Automatic continuous washing is the linen washing and drying system that is most efficient for large-scale production requirements. It consists of a loading system, a batch washer, an extraction press and a drying system.

Girbau's TBS-50 washing system includes all the equipment required for continuous washing, with the advantages of synchronisation, programming and management that comes with working with equipment from a single supplier.



PARTNERS IN YOUR BUSINESS, FROM THE OUTSET

Girbau does not simply manufacture equipment. It designs laundries so that you can achieve your goals, acting as your partner from the very beginning and providing you with the advice that your business requires.

Defining the configuration of the equipment, the design of the laundry, its implementation, our after sales service and advice and training in work processes are examples of services that demonstrate our comprehensive model of customer service. Girbau's worldwide technical and commercial team, with its 14 subsidiaries and dealers in over 80 countries, ensures a close monitoring of your laundry. Your success is our success.

A BATCH WASHER FOR EVERY LAUNDRY

The versatility and adaptability of the batch washer is the key to achieving profitability and the expected results, depending on the requirements of each laundry.

The TBS-50 batch washer can be customised the bath diagram depending on the type of linen and soiling to be processed, as well as the consumption and the chemical process applied.





GIRBAU

- CONSUMPTION

The TBS-50 batch washer features integrated recirculation and recycling of the water, allowing it to be used up to three times. In addition to reducing water consumption, it also reduces energy consumption.

+ MECHANICAL ACTION

The mechanical action is achieved with a programmable inversion angle of 270° and a drum designed specifically for this purpose, thereby obtaining an optimum quality wash.



Proportional load: The dosage of chemicals and water is automatically adjusted depending on the load, which can range from 30 to 55 kg.

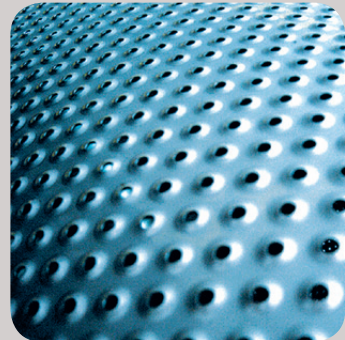
- BLOCKAGES

Transferring the load through a large central opening by rotating the drum prevents any risk of blockage. A blade lifts up the load before transferring it. A series of continuously self-checking sensors confirm that the conditions for successful transfer are fulfilled.

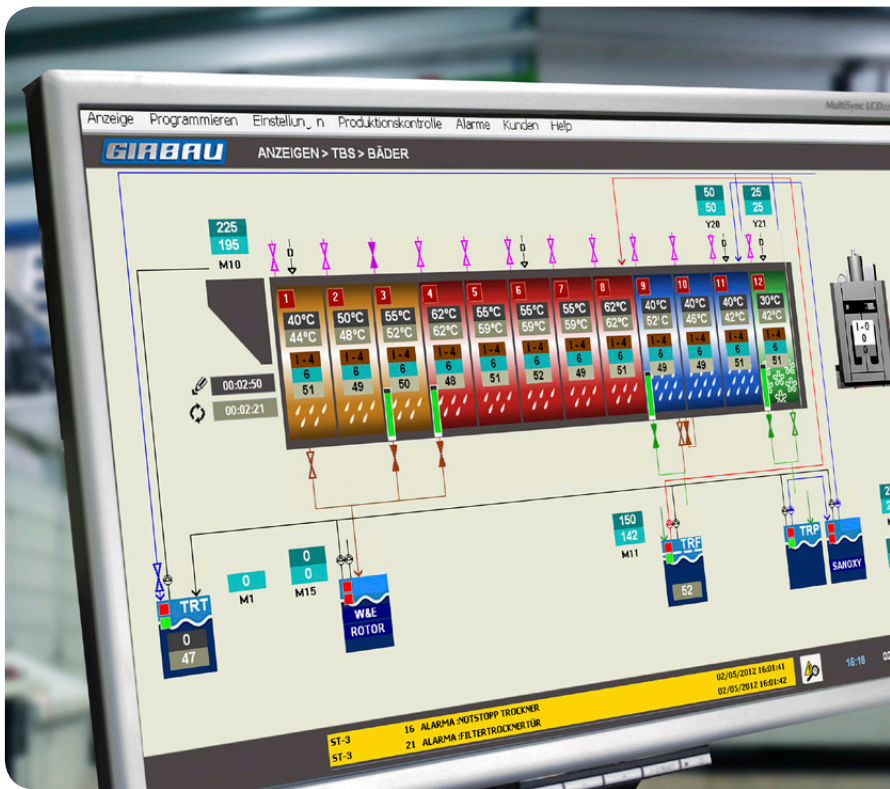
+ FLEXIBILITY

All the batch washer's modules are identical, and can include inputs for water and chemical products, drainage, pH and temperature probes. The total flexibility in the way the process can be configured allows you to ensure you have a batch washer that meets both present and future requirements.

IMPROVED LINEN TREATMENT



The drums for the batch washer are the result of over 50 years' experience manufacturing industrial washing machines. The exclusive manufacturing system, with a transfer blade that is completely smooth, and a drum with pressed perforations, leave the drum without any rough edges, thus reducing wear and tear compared with other batch washers on the market. The transfer of the load via a central aperture prevents the linen from tangling, ensuring a gentle treatment even when applying an intensive washing process.



A USER-FRIENDLY AND INTUITIVE ENVIRONMENT

The information is displayed in an easy and intuitive way, making it easy to control, manage and program the batch washer. The colour graphics, illustrations and multiple language options help the user to understand and manage the software. All data is exportable in spreadsheet format for later treatment as desired.

REAL TIME INFORMATION AND TRACKING

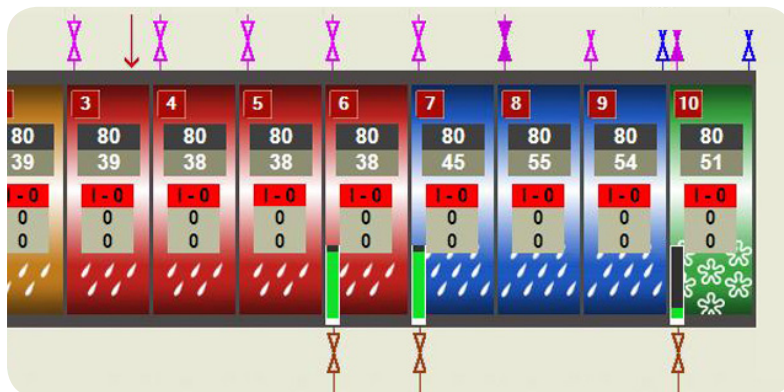
The BMT can control all the parameters associated with each load, such as the number of programs and customers, the weight of the load and the processing time. All the parameters involved can be controlled for each process.

In the case of washing, the system records the temperature, disinfection time, pH, conductivity, dosage, ...

in the case of pressing, the pressure, temperature or the pressing time, among others;

and in the case of drying, parameters such as the drying time and temperature are identified, as well as the load.

For total traceability, the system stores all these parameters so they can be retrieved and analysed whenever the user requires.



CONTROLLING ALARMS

The alarm control management allows the user to identify any incident that may have arisen, plus its origin, repetitiveness and duration.

REMOTE SUPPORT



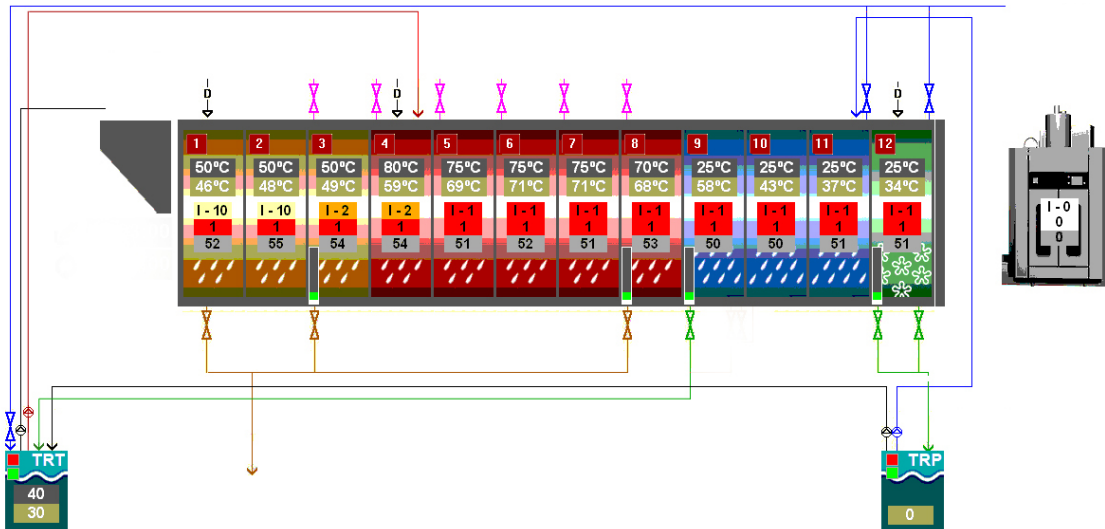
Girbau equips all its batch washers with Girbau Remote Support as standard.

This tool provides an immediate and close accompaniment to your business: on-line advice, remote maintenance and distance troubleshooting...



multiTUNNEL

The batch washer that demonstrates that simplicity can mean effectiveness. It has all the necessary features, with excellent performance, high production and minimal maintenance.



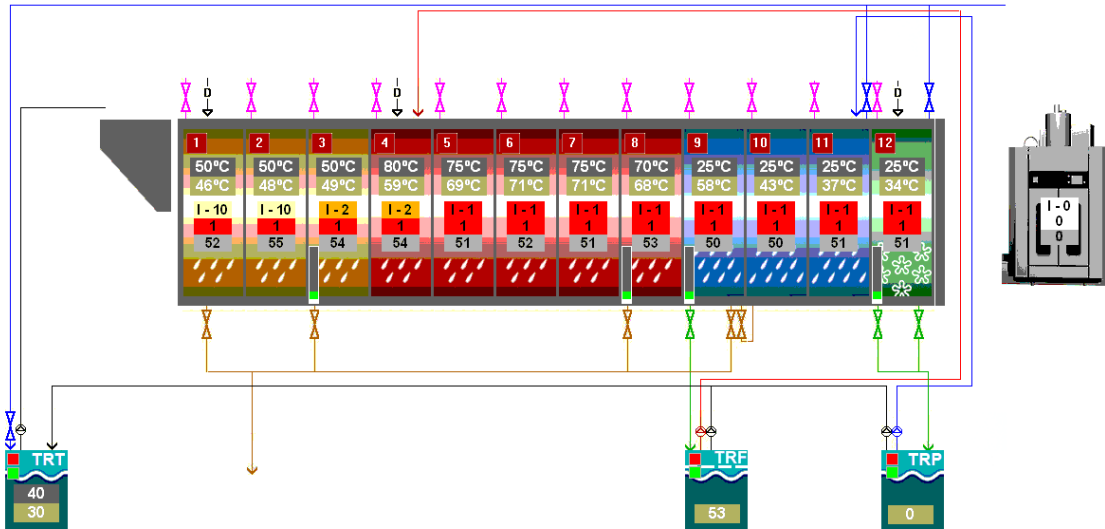
A PROFESSIONAL SOLUTION FOR A WIDE RANGE OF PURPOSES

- Independent pre-wash, washing, rinsing and neutralising phases
- Two recovery tanks: the main tank and another in the extraction press area.
- An electronic flow control system for water inputs.
- Steam in all the washing modules.
- De-sanding and thermostop function.
- Suitable for general washing applications, industrial laundering, catering, residences, resorts, hotels, ...



hygienTUNNEL

The Hygien-Tunnel carries out intensive washing processes for laundry with a high level of soiling or those that require disinfection. It is especially suitable for the health sector.



MAXIMUM GUARANTEE OF HYGIENE

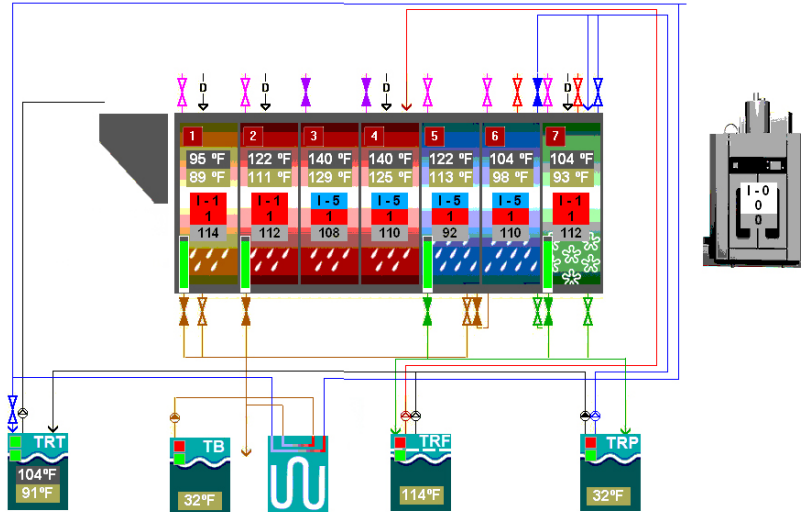
- Intensive washing applications.
- An intermediate tank, with a built-in filter that allows water to be recovered at a high temperature. The filter allows the water to be cleansed of fibres and coloured particles to prevent them from being transferred to subsequent loads.
- An electronic flow control system for water inputs.
- An option for keeping the soaking phase separate from the pre-wash.
- Incorporation of steam in all the modules.
- Thermal insulation in all the modules.
- VIGOROUS RINSE function.
- A batch washer disinfection program: With the batch washer load-free, and with water and the necessary chemical products inside, steam is injected into all the modules and the machine kept at a temperature of 80° C for the programmed time.
- This is indicated for applications with a high level of soiling and for washing in the health and hospital sector.





ecoTUNNEL

The Ecotunnel includes the latest recovery technologies and control systems to maximise savings in energy, water and chemical products.



MAXIMUM EFFICIENCY IN THE WASH

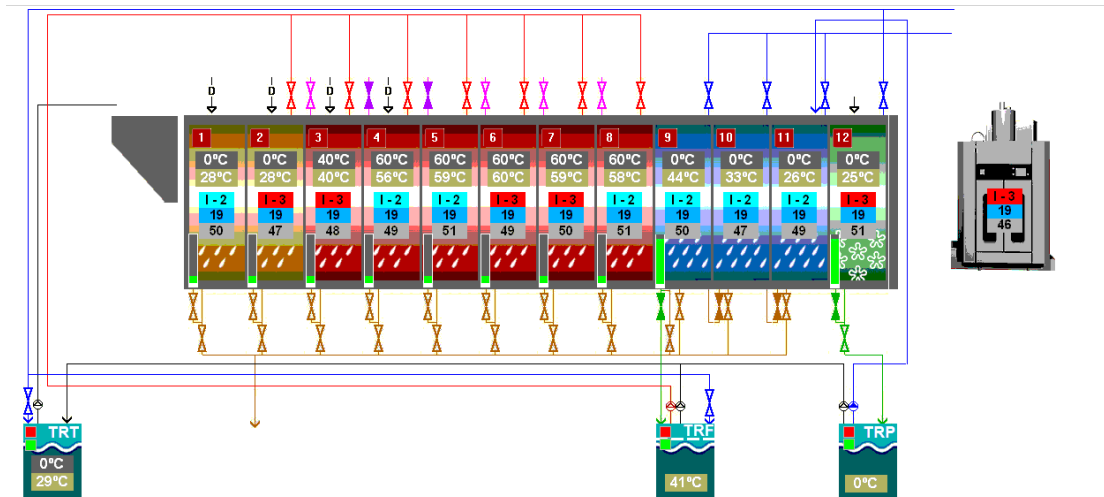
- An electronic flow control system for water inputs - both those from the mains supply and re-circulated water.
- Drain Intercooler: a water-water heat exchanger system that uses the heat from the drain water to preheat the water coming from outside. This achieves an energy saving of more than 30%.
- Disinfection function.
- Thermostop function: With this function, the transfer of linen is not permitted until the programmed temperature is reached in the indicated module.
- De-sanding function: With this function, module 1 is periodically emptied to aid the removal of sandy residues.
- Suitable for clients who wish to maximise efficiency, without impacting optimum washing performance.





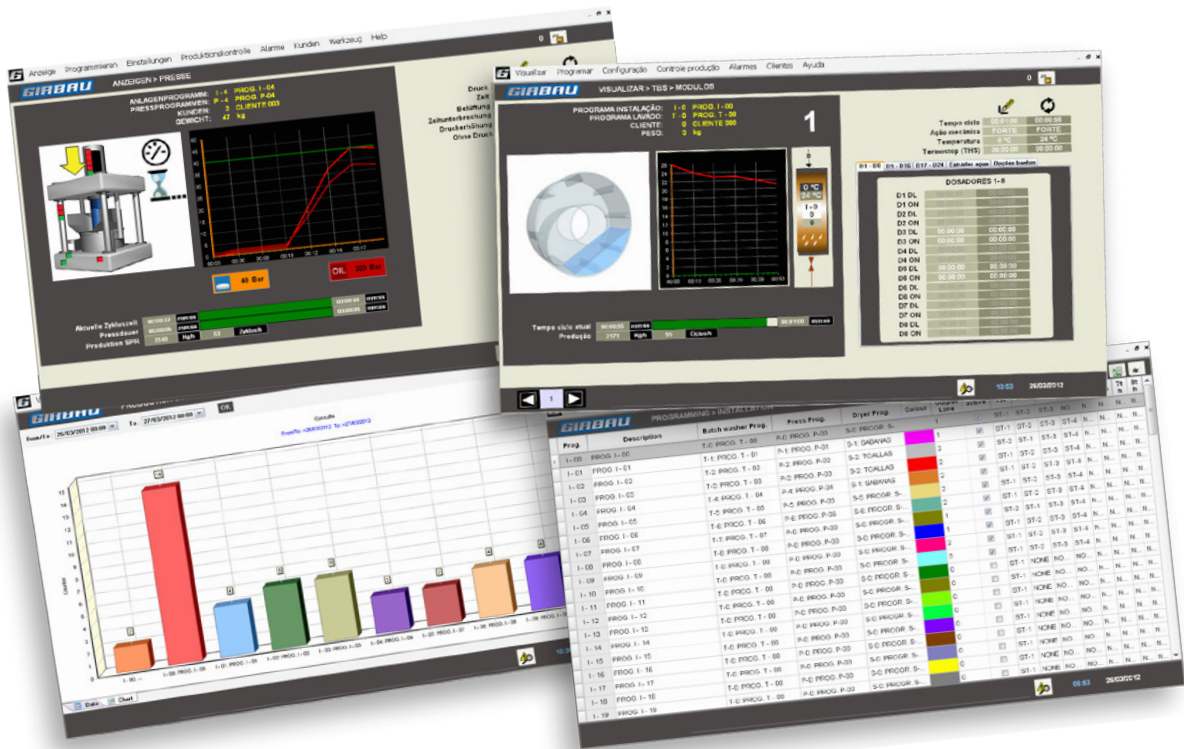
flexiTUNNEL

The batch washer that allows absolute flexibility and versatility in the design of the bath diagram.



THE MOST VERSATILE OPTION IN BATCH WASHERS

- The batch washer allows each module to be configured independently. Each module operates completely autonomously from the rest.
- Halted baths: the flexibility is such that it can be configured in a variety of ways, ranging from a pre-wash on flow, a wash on or counter flow, a rinse counter flow, and even a wash through individual chambers with processes that are completely separate from each other. The option allows the user to work with loads with a high level of dirt or a significant amount of solid waste, or with laundries that work with loads of different colours.
- Offering easy operation and the simplicity of other batch washer models, but with the possibility of working with different baths, colours or chemical products, simultaneously inside the batch washer.
- Especially suitable for laundries focusing on laundering uniforms (mining, auto industries, hospitals, ...), table linen (restaurants, catering for weddings and banquets, ...), which have high levels of dirt and a range of different colours.



BMT: OUR WINDOW INTO THE BATCH WASHER

Have you ever wondered why good batch washer management software is critical in a laundry?

It is not only because it is an essential tool for managing costs and production, and identifying programs, clients...

The batch washer operates in its own sealed environment within the laundry because there is no way we can see what is happening inside.

This is why we need to place all our trust in a management system to take care of the large amount of our clients' linen moving inside in each cycle and to keep us informed accurately and constantly of everything taking place in each module.

The eyes of the Girbau batch washer are the BMT - Batch Washer Management Tool.



PRECISION



Accurate and up-to-date information about everything that happens in the batch washer is essential in order to follow the progress of each process. The colour touch-screen displays the production details for each element of the batch washer: times, temperatures, weights, customer name, dosage...

The BMT can be used to adjust accurately how many litres of water enter per kilo of linen in each phase (pre-wash, wash, rinse and neutraliser). For each cycle, it checks that the amount of water used is only what has been programmed, thus optimising water management once again. In addition, chemical products are dispensed in the exact doses programmed by the software.

A COMPLETE SOLUTION IN INDUSTRIAL LAUNDERING

GIRBAU BATCH WASHING SYSTEM



BAG SYSTEM

Girbau offers made to measure solutions for bag loading systems. Our engineering sales team can create a project tailored to the needs of each client. Bag loading systems allow the linen to be selected, stored and loaded into one or several batch washers existing in the laundry.



LOADING CONVEYOR

A sloping conveyor with 3 or 4 compartments of 50kg each allow the batch washer to be loaded automatically. It incorporates automatic weighing and moves forward automatically at the batch washer's work pace.



BATCH WASHER

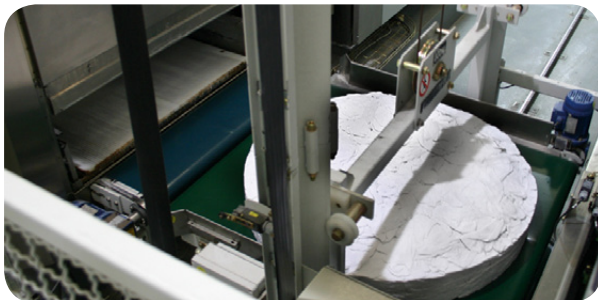
The TBS-50 batch washer's modular system means it can adapt to all kinds of facilities (hospitals, hotels, industrial laundries, ...) Its versatility and flexibility makes the TBS-50 batch washer an investment for the present and for future growth.

Available in Hygien, Multi, Eco and Flexi versions.



EXTRACTION PRESS

The press extracts the water from the loads coming from the batch washer. In under two minutes, the pressure extracts the water from the load, thereby aiding the drying and ironing operations, and reducing the cost of these processes.



UNLOADING CONVEYOR

The CED movable elevating conveyor makes it possible to distribute the linen loads coming from the extractor press.

Fitted with one or two loading tables, it automatically distributes the loads to the dryers depending on their availability.



DRYERS

The ST-100 and ST-1300 dryers, with up to 120kg and 63kg capacities respectively, allow the loads from the press extractor to be untangled, conditioned or dried. The simplicity of its design and its sturdy construction ensure maximum durability with far less maintenance.

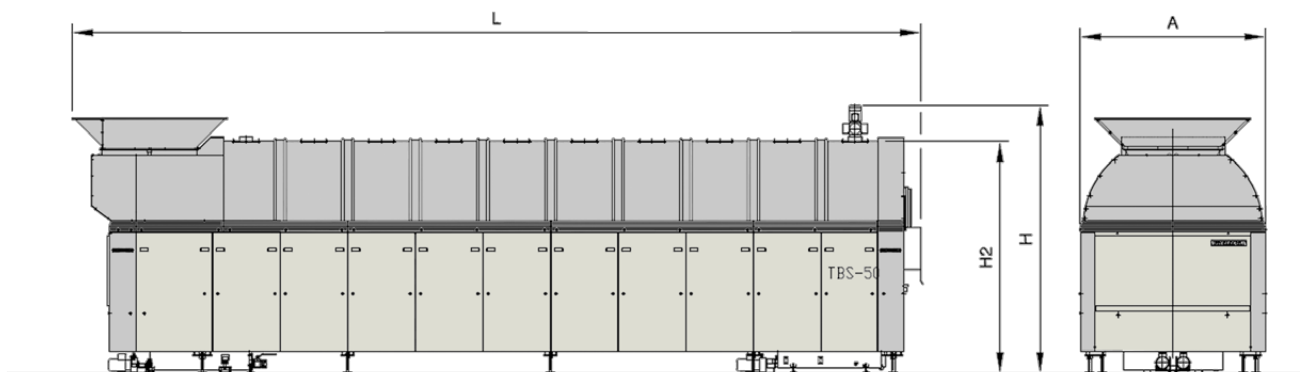
TBS-50 Batch washer



P00567 04/14

MODELO			TBS-50/5	TBS-50/6	TBS-50/7	TBS-50/8	TBS-50/9	TBS-50/10	TBS-50/11	TBS-50/12
Drum dimensions	Loading Capacity	Kg (lbs)	30 to 55 (66,1 to 121,2)							
	Transfer Ø	mm (in.)	850 (33,4)							
	Wash beaters no.		7							
	Outer drum Ø	mm (in.)	1.950 (76,7)							
	Inner drum Ø	mm (in.)	1.850 (72,8)							
	Drum width	mm (in.)	780 (30,7)							
	Drum volume	dm ³ (cu.ft)	2.100 (74,2)							
Features	Wash speed	rpm	2-8							
	Wash angle		270°							
	Transfer angle		450°							
Machine dimensions	Length L	mm (in.)	5.910 (232,6)	6.695 (263,6)	7.480 (294,5)	8.265 (325,4)	9.050 (356,3)	9.830 (387)	10.615 (418)	11.400 (448,8)
	Width A	mm (in.)	2.160 (85)							
	Height H	mm (in.)	3.016 (118,7)							
	Height H2	mm (in.)	2.650 (104,3)							
Weights	Net weight	Kg (lbs)	5.750 (12.677)	6.300 (13.889)	6.850 (15.101)	7.400 (16.314)	7.950 (17.526)	8.500 (18.739)	9.050 (19.951)	9.600 (21.164)
	Max. Working weight	Kg (lbs)	9.000 (19.842)	10.200 (22.487)	11.400 (25.132)	12.600 (27.778)	13.800 (30.423)	15.000 (33.069)	16.200 (35.714)	17.400 (38.360)

Girbau S.A. reserves the right to change design and/or specifications without notice



BRANCHES

Argentina - Buenos Aires - Tel. +54-1 149017600 - girbauargentina@girbau.com.ar
 Australia - Castle Hill, Sydney - Tel. +61298940399 - sales@girbau.com.au
 Brazil - Sao Paulo - Tel. +55 11-29820446 - girbaudobrasil@girbau.com.br
 China - Shenzhen & Hong Kong - Tel. +86-755-8211 1330 - info@girbau.com.cn
 Cuba - La Habana - Tel. (+53-7) 8662071 al 73 - girbau@girbau.co.cu
 Dominican Rep. - Punta Cana - Tel. +1 809-959-0615 - info@girbau.do
 France - Roissy (Paris) - Tel. +33 1-49388585 - info@girbau.fr
 Germany - Hannover - Tel. +49-511 60099389 - girbau@girbau.de
 Italy - Marcon (VE) - Tel. +39 0418654330 - info@girbau.it
 Portugal - Porto - Tel. +351 22 3758909 - vendasportugal@girbau.pt
 U.A.E. - Dubai - Tel. +971 4-8839951 - sales@girbau.ae
 U.K. - Hitchin - Tel. +44(0)-1462 427780 - info@girbau.co.uk
 U.S.A. - Oshkosh, WI & Los Angeles, Ca - Tel. +1(920) 2318222 - info@continentalgirbau.com

HEADQUARTERS

GIRBAU, S.A. Ctra de Manlleu, km. 1 - 08500 Vic (Barcelona) Spain - www.girbau.com
 Tel. (+34) 93 886 2219 - Fax (+34) 93 886 0785 - sales@girbau.es

Produkt-Video

